

Qeridoo

Q8-20
Q9-20
Q8S-20
Q9S-20

Kidgoo1 2020

Kidgoo2 2020



This product fulfils all safety requirements of the European standard for bicycles and bicycle trailers (DIN EN 15918).

Manufacturer's warranty



Tip!

Make sure you get our exclusive manufacturer guarantee. You just need to register your new Qeridoo online at herstellergarantie.qeridoo.de.

For more information about the manufacturer's warranty, please refer to the section „Warranty terms“ on page 35.



Certificates

The *Kidgoo* meets all the safety requirements of the European safety standard EN 15918, and the EN 1888 baby carriage standard has also been taken into account. Our children's bicycle trailers also meet all the harmful substance limits required by the European safety standards. Compliance with the statutory limit values for harmful substances for all textiles is also regularly checked by independent testing institutes such as TÜV. Quality management is certified according to ISO 9001.

Pollutant test

Chemical tests

- » REACH (SVHC candidate list)
- » PAK
- » Soluble heavy metals
- » Allergens
- » Formaldehyd
- » Flame retardants
- » Softeners
- » Friction- / Sweat- / Spittle- / color brilliance
- » Short-Chain chlorinated paraffins
- » Organotin links
- » Azo dyestuffs



Documentation



Caution!

The statements in this documentation are not to be interpreted as an assurance of particular product properties. Despite the greatest care being taken to avoid technical inaccuracies or omissions, the possibility of these arising cannot be entirely excluded. When necessary, individual items of information can be changed quickly and without special notification.

This documentation can be ordered from Qeridoo GmbH in other languages, or is available for download on our website if already available. Visit us at: www.qeridoo.de

Copyright

All rights to the documentation remain with Qeridoo GmbH.

Texts, values and illustrations may not be reproduced, distributed, used for competitive purposes or passed on to others. If other product names are used in this documentation, these must normally be regarded as registered trademarks of the respective manufacturer.

Pronunciation and meaning

Qeridoo was borrowed from Spanish querido, which means **to be fond of, to like or to love**.

And this is exactly what we do. We love our products.

Qeridoo
Qeridoo - ke'ri.do

Contents

Introduction	4		
Proper use	4	Securing the wheel (Walker mode)	22
Performance limits	4	Insert tow bar	22
Size	5	Using the pennant	22
Notes on the user manual	5	Attaching the hand strap	22
		Putting on the 5-point safety harness	22
Safety instructions	6	Securing the load	23
Users	6	Loading the baggage	23
Conditions of use	6	Loading the storage space	23
Passenger	7	Using the pouch on the outside	23
Towing vehicle (Trailer mode)	7	Using the pouch on the inside	23
Maintenance and storage	7	Embarking the children	23
Cycling with a trailer	8	Preparing the cabin	23
Additional lanes	8	Placing the children	23
Additional weight	8	Strapping in children	24
Defensive riding	8	Mid sitting position (Kidgoo2)	25
		Checking the weight distribution and tow bar load	26
Product overview	9	Checking the tow bar load	26
Scope of delivery	9	Changing the tow bar load	26
Components and control elements	10	Total weight too heavy	26
Side view	10	Connecting the trailer to a bicycle	27
Rear view	11	Decoupling the trailer	27
		Using the comfort functions	28
Assembly	12	Using the climate functions	28
Unpack contents	12	Adjusting the 3-in-1 canopy	28
Unfolding the cabin	12	Stow away the 3-in-1 canopy	28
Installing the side rods	12	Using the sun visor	28
Installing the wheel axle (Kidgoo2)	13	Using the ventilation windows	29
Mounting the foot brake	13	Adjusting the suspension	29
Installing the disc brake (Kidgoo Sport)	14	Storage	30
Inserting the wheels	14		
Installing the wheel guard and the leaf spring cover	14	Care and maintenance	31
Installing the head protectors	15	Care	31
Mounting the push handle	15	After every use	31
Tightening the backrest	16	After use in harsh weather conditions	31
Inserting the pennant	16	When not in use	32
Mounting the locking button to the tow bar holder (Kidgoo2)	16	Maintenance intervals	32
Optional assembly steps	17	Before every ride	32
Installing the buggy wheel	17	Monthly (or every 200 km)	32
Adjusting the buggy wheel	17	Semi-annually (or every 500 km)	33
Mounting the tow bar	17	Every three years (or every 3.000 km)	33
Mounting the coupler onto a bicycle	18	Alle vier Jahre (oder alle 5.000 km)	33
Installing the rear light	19		
		Appendix	34
Utilisation	20	Technical data	34
Operating the parking brake	20	Warranty terms	35
Adjusting the push handle	20	Support information	36
Setting the mode	21	Spare parts	37
Adjusting the buggy wheel	22	Frame components	37
Removing the buggy wheel (Trailer mode)	22	Other spare parts	38
Setting the wheel so that it turns freely (Buggy mode)	22		

Proper use

The *Kidgoo* was designed as a bicycle trailer and comes with an additional buggy and walker function. For **Trailer mode**, use a tow bar with coupler to connect the trailer to a suitable towing vehicle (bicycle or motorised pedelec with a maximum speed of 25 km/h). With the buggy wheel attached, the *Kidgoo* can be used as a child carrier in **Buggy mode**. In **Walker mode** you can use it when walking.

The *Kidgoo* is available as a one-seater (*Kidgoo1*) or as a two-seater (*Kidgoo2*) and should be used exclusively for the private transportation for one or two children on paved routes. You can also carry baggage in the compartments intended for that purpose, provided that you observe the permissible weight limits and stow the baggage securely so that the load is evenly distributed.

During the journey, each child must be secured in the seat by a safety harness. If you are carrying only one child in the two-seater, you must alter the harness arrangement as per the instructions in the chapter „**Mid sitting position (Kidgoo2)**“ on page 25 so that the child is seated securely in the centre.

The *Kidgoo* fulfils all safety requirements of the European standard for bicycles and bicycle trailers (DIN EN 15918). It also considers the wheeled child conveyances norm EN 1888. In Trailer mode, a rear light must be installed in accordance with the Road Traffic Licensing Regulations and to be in use in darkness or in conditions of poor visibility. Before using the *Kidgoo*, check which local regulations apply and how the product may be used.

It must not be used on unsurfaced ground, to transport baggage in the passenger compartment, to carry animals or for commercial use. It is essential to observe the limit values specified in the chapter „**Performance limits**“ on page 4 and to check them before every journey. In all cases, the rider of the combination or the person using it in Buggy or Walker mode is responsible for the proper use and roadworthiness of the *Kidgoo*.

Performance limits

The *Kidgoo* can only be safely used if you observe and adhere to the following performance limits in every mode:

Requirements for passengers	Kidgoo1	Kidgoo2
Weights		
Permissible total weight (Kidgoo + children + luggage)	50 kg	60 kg
Permissible payload (children + luggage)	33 kg	41,5 kg
Maximum total weight of two children	-	41,5 kg
Maximum weight per child	22 kg	22 kg
Compartment room	5 kg	5 kg
Age		
Minimum age (without accessories) The child must be able to sit up independently. For children aged up to 18 months, we recommend using a comfort insert	6 Monate	6 Monate
Minimum age (with accessories)	1. Monat	1. Monat
Maximum age	6 Jahre	6 Jahre
Size		
Maximum height	116,5 cm	116,5 cm

If accessories are used, they have to be subtracted from the payload. The weight of the empty trailer with installed accessories plus payload must not exceed the permissible total weight.

Introduction

Size

Children may be transported up to a maximum size from 116,5 cm.

The following additional restrictions apply to Trailer mode:

Requirements for the tow bar Kidgoo1 and Kidgoo2	Kidgoo1 and Kidgoo2
Permissible tow bar load range (on the tow bar coupler pocket)	0 – 8 kg
Minimum ambient temperature	-10° C
Requirements for the towing vehicle	Kidgoo1 and Kidgoo2
Vehicle type	Bicycle, pedelec / E-Bike (supported for up to 25 km/h)
Maximum permissible speed	25 km/h; in curves max. 7 km/h (walking pace)
Größe des Hinterrads	25" – 29"

Notes on the user manual

This user manual provides you with information about all technical and safety aspects that you require for mounting, using and maintaining the Kidgoo.

- » Read the user manual in full.
- » Utilise the user manual to provide instruction for all users.
- » Always keep the user manual close to the Kidgoo.



Danger!

Labels notes referring to the Danger risk level. Indicates possible dangers that can result in injury if the instructions are not followed.



Caution!

Labels notes referring to the Caution risk level. Indicates possible dangers that can result in material damage if the instructions are not followed.



Tip!

Labels important information pertaining to the current subject. Indicates alternative actions, other information sources or helpful tips.

All **stated positions** (left, right, front, back, top, bottom etc.) refer to the perspective of a viewer standing behind the push handle and looking in the direction of travel. The tow bar is therefore in front, the push handle behind.

In this user manual, the word **user** refers to the person transporting children with the *Kidgoo* and making the necessary adjustments on the vehicle.

This user manual applies both for the *Kidgoo1* and *Kidgoo2*.



Danger!

Read the safety instructions below carefully.

The safety and accident prevention regulations valid in your region and statutory rules such as the road traffic regulations also apply, and take precedence in cases where there is doubt.

Make sure that the *Kidgoo* is used only by persons suitable for its operation, as defined below. Users must have read and understood this user manual in full.



Caution!

The *Kidgoo* is not a toy and must not be misused as such. This means that it is not permissible to attach the *Kidgoo* to a child's bicycle.

Users

- » Users are defined as the following persons:
 - Any person carrying out assembly work on the vehicle or changing the settings.
 - The rider of the towing vehicle in Trailer mode.
 - The operator in Buggy or Walker mode.
- » The user must be at least 16 years old and mentally mature enough to operate the *Kidgoo* and transport children.
- » In Buggy mode, operation by a younger person is allowed if he / she is supervised by a person who meets the requirements stated above.
- » The user is at all times responsible for the proper use and roadworthiness of the *Kidgoo*.

Conditions of use

- » The *Kidgoo* must not be used for commercial or competitive purposes.
- » Check the screw connections for tight fit before the first use. In particular, the tow bar holder, the spokes and the thru axles of the wheels must be checked before use.
- » Before every journey, check that the *Kidgoo* is in a proper and technically faultless condition.
- » Perform a visual inspection and in particular pay attention to the instructions and checklists in the chapter „**Maintenance intervals**“ on page 32. The notes in the chapter **Before every ride** and **Monthly (or every 200 km)** also apply to the first use of the *Kidgoo*.
- » Also inform yourself about country-specific rules and traffic regulations if you are making trips across borders or if you want to take the *Kidgoo* with you on trips abroad.
- » Before every journey, make sure that the requirements for the particular mode have been fulfilled.
- » In particular, pay attention to the table and the instructions in the chapter „**Setting the mode**“ on page 21.
- » In Trailer mode, a rear light must be indicated and operated on the left side of the push handle in accordance with the Road Traffic Licensing Regulations in darkness or conditions of poor visibility.
- » Before every journey, close the inner part of the 3-in-1 canopy so that the integrated insect net protects the children from insects and small stones. When in traffic, the weather canopy should also be closed and the ventilation window open to provide protection against exhaust fumes.

Passenger

- » The *Kidgoo1* can carry one child and the *Kidgoo2* can carry two children aged between 6 months and 6 years. Special accessories must be used in order to secure children who are under 6 months old or who cannot sit upright independently, see www.qeridoo.de/zubehoer.
- » So that they have sufficient headroom in all situations, the children must not be taller than 116,5 cm.
- » Each child must be properly fastened in with a 5-point safety harness.
- » The children must wear bicycle helmets for every journey. This is also recommended for the bicycle rider in Trailer mode in order to set a good example.
- » Before each journey, explain to the children that they must behave appropriately. Undoing safety harnesses, excessive rocking or leaning out must be strictly forbidden.
- » Make sure that the cabin is well ventilated and make sure that the children are wearing clothes appropriate for the weather conditions and the cabin's inside temperature.
- » Never leave children unsupervised in the *Kidgoo* and make sure that they feel comfortable.
- » Make regular stops during longer journeys to give the children the opportunity to get out and move around. Make sure that they drink sufficient liquids.



Towing vehicle (Trailer mode)

- » As the towing vehicle, it is not permitted to use vehicles that must be registered such as motorised e-bikes for speeds up to 45 km/h or vehicles with a combustion engine.
- » Please note that bicycle trailers towed by electrically power assisted cycles (EPAC) may be restricted by law.
- » The bicycle or the pedelec (motorised for speeds up to 25 km/h) must be technically sound and suitable for towing loads in accordance with the permissible total weight. The maximum permissible total weight can be found in chapter „**Performance limits**“ on page 4. For details, read the towing vehicle's manual or consult a specialist dealer for a suitable inspection to be carried out.
- » Before every journey, test the function of the bicycle's brakes, brake linings and tyres and inspect them for wear. Check that the coupler is secure.
- » For carrying passengers, the bicycle should be equipped with a rear-view mirror. Working lights conforming to the road traffic regulations are mandatory for journeys in darkness or conditions of poor visibility.

Maintenance and storage

- » Follow all instructions relating to the care and maintenance of the *Kidgoo* and observe the specified maintenance intervals, see „**Care and maintenance**“ on page 31.
- » Install and use only original accessories and spare parts manufactured or recommended by Qeridoo. Using other products relieves the manufacturer of liability.
- » Only carry out structural modifications or extensions to the vehicle which are necessary for the use of the approved accessories in accordance with the assembly instructions. Any further manipulation that is not expressly approved by the manufacturer in writing relieves the manufacturer of liability in the event of accidents and defects.
- » Follow the instructions in the chapter „**Storage**“ on page 30 for storing the *Kidgoo* properly when it is not in use.

Cycling with a trailer

- » The way in which the bicycle moves changes significantly when it is pulling a trailer, and this is particularly noticeable when braking and cornering. With regard to this, pay attention to the following:
- » Practice cycling with the trailer before going out onto the road.
- » Do not carry children until you have familiarised yourself with the different riding behaviour on suitable terrain.
- » Think of the children's safety whenever you ride. Always adapt your way of riding and your speed to local conditions, and never forget that you are towing a trailer.

Additional lanes

- » The two wheels of the Kidgoo run outside the familiar cycling lane. On all routes, particularly when there are obstacles and potholes, remember that you will always need 3 suitable lanes for safe riding.
- » The Kidgoo1 is 67 cm and the Kidgoo2 is 81 cm wide. Maintain a sufficient distance from obstacles and avoid routes that are too narrow. Always negotiate narrow points and bends slowly.
- » Combined, the bicycle and trailer are at least 2.5 m long in total. Negotiate curves with wider radii than usual and bear in mind the additional lane required for the inner wheel of the Kidgoo.

Additional weight

- » When fully loaded, the Kidgoo1 weighs up to 50 kg and the Kidgoo2 weighs up to 60 kg that the bicycle must pull, brake and keep on track in addition to its own weight and that of the rider:
- » Jerky pulling and braking puts high loads on the coupler and tow bar, and thereby increases wear.
- » All stopping distances are much longer when braking, and the stress on the brake linings is correspondingly greater. The stopping distance is further increased on wet surfaces and downhill slopes.
- » During braking, especially on bends, the trailer can swing out or push the bicycle's rear wheel to the side and reduce its traction.
- » High centrifugal force on bends can result in the trailer tipping over.
- » Do not exceed the maximum permitted speed of 25 km/h and avoid riding at an angle.
- » Drive downhill and curves at walking pace (max. 7 km/h), to rule out excessive centrifugal forces.

Defensive riding

- » Always ride defensively and with foresight.
- » Brake in good time before reaching bends, junctions, obstacles etc.
- » Always negotiate uneven surfaces slowly. Keep away from steps, escalators and very steep stretches.
- » Get off the bike at curbs and pass them slowly.



Danger!

Failure to comply with the aforementioned safety instructions can lead to property damage and personal injury.

Scope of delivery



- 01 Pennant with 2-part pennant staff and centre piece
- 02 Tow bar with coupler and retaining strap
- 03 Push handle with hand strap
- 04 Cabin with seats and 5-point safety harnesses
- 05 Wheel guard (2x)
- 06 Head protectors (2x)
- 07 2 wheels
- 08 Multiwheel buggy wheel
- 09 Leaf suspension cover (2x)
- 10 Wheel axle with suspension*
- 11 1 head rest (Kidgoo1) or 2 head rest (Kidgoo2)
- 12 Rear light (StZVO compliant)
- 13 Screws and tools
- 14 Locking button*
- 15 Disc brake add-on (only Kidgoo Sport)

* Pre-assembled on Kidgoo1.

The scope of delivery includes some functional units of the Kidgoo already preassembled.

- » Unpack all supplied parts and place these on a clean surface.
- » Check the contents of the package against the list provided.

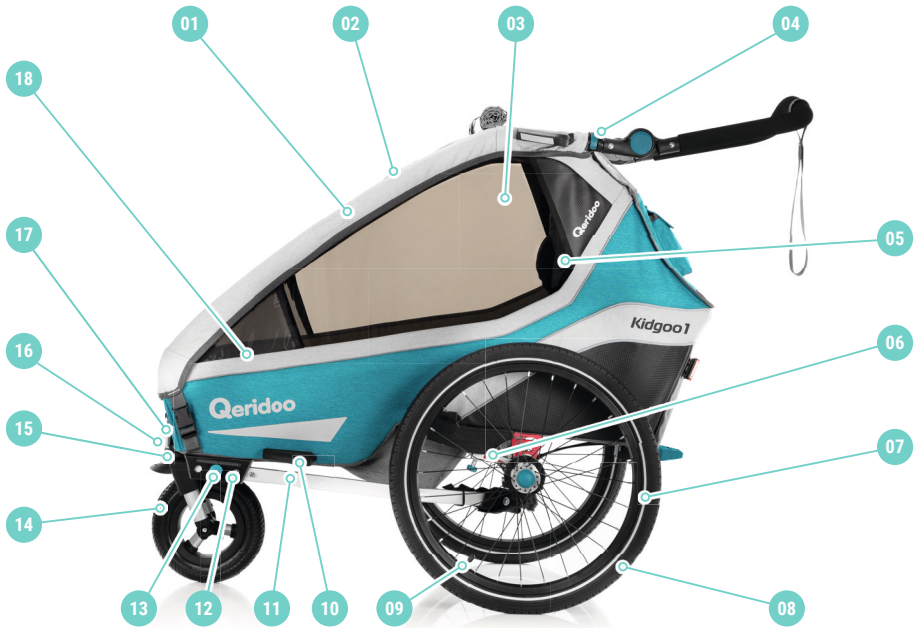


Caution!

Contact our Service department immediately if any parts are missing or if you find that the packaging or product is damaged, see „**Support information**“ on page 36.

Components and control elements

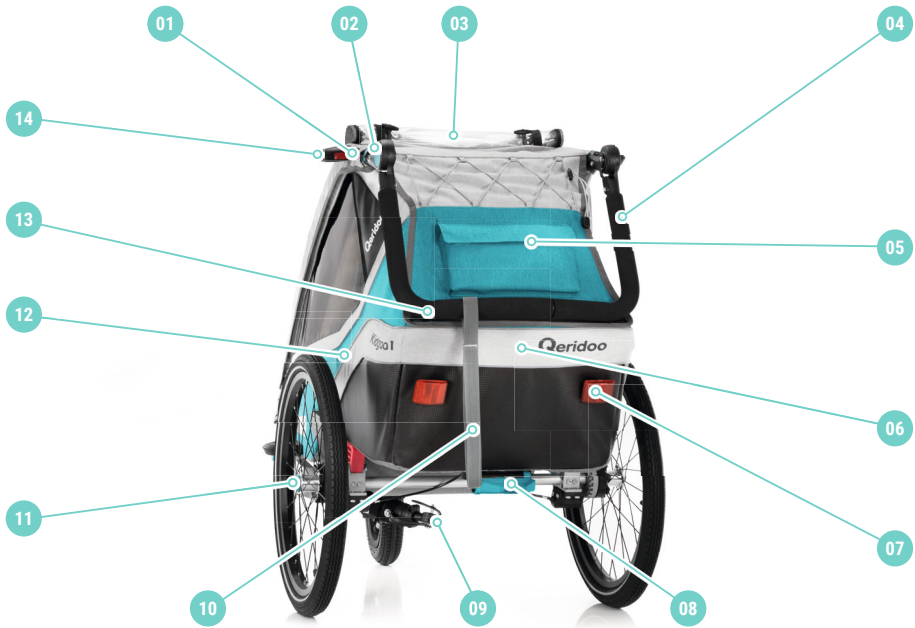
Side view



- 01 Cabin (frame made from aluminium tubes with weatherproof fabric cover)
- 02 3-in-1 canopy to protect against insects and splash water with integrated sun visor, rollable
- 03 Side window (incl. ventilation window)
- 04 Quick release for push handle
- 05 Seats with 5-point safety harnesses and head rest
- 06 Leaf suspension with rubber damper
- 07 Reflector strip
- 08 20" wheel with push-in axle
- 09 Air valve (Schrader valve)
- 10 Wheel guard for rejection from obstacles
- 11 Tow bar for trailer mode
- 12 Tow bar holder
- 13 Locking button
- 14 Buggy wheel for three-wheel use in Buggy or Walker mode
- 15 Wheel mount on the cabin frame
- 16 Operating mode switch:
Buggy mode: rotatable wheel
Walker mode: wheel running straight
Trailer mode: dismantled buggy wheel
- 17 Front reflector, white
- 18 Small pouch in the footwell of the cabin

Components and control elements

Rear view



- 01 Loop for fastening the pennant
- 02 Push button for adjusting the height of the push handle
- 03 Splash water cover, rollable
- 04 Push handle, height adjustable with Rollover protection function
- 05 Stauraumklappe mit zusätzlichen Verstaumöglichkeiten
- 06 Storage space behind the seats, accessible from the outside
- 07 Rear reflector, red
- 08 Parking brake
- 09 Coupler pocket with cotter pin fastening and retaining strap for securing the tow bar on the bicycle frame
- 10 Handstrap for buggy- and walker-mode
- 11 Rubber cap for push-in axle release when mounting the wheels
- 12 Reflective seams in the fabric cover
- 13 Rear light position
- 14 Head protectors

Assembly

Below you can read all the information that you will need to assemble your *Kidgoo* properly.

- » Make sure that you have sufficient space to assemble it. Also pay attention to the door width at the place of installation: The *Kidgoo1* is 67 cm wide with the wheel guards fitted and the *Kidgoo2* is 81 cm wide.
- » Have a size 4 allen key at hand.
- » Perform each of the instructions step by step.
- » If necessary, follow the QR code to call up a video about assembly and operation on the Internet:
- » You can find our video tutorials on our YouTube channel
www.youtube.com/user/Querido0



Danger!

Never perform assembly work if there are children in the cabin. Keep children away from the vehicle during assembly.

When handling moving components, make sure that your hands or fingers do not get trapped. Before using the appliance for the first time, check all screwed and splint connections carefully.

Unpack contents

- » Remove the packaging material and all protective caps, and dispose of them in accordance with the environmental guidelines that apply in your region.
- » Cut the zip ties at the rear of the cabin
- » Read the chapter „**Assembly**“ on page 12 before you assemble parts.

Unfolding the cabin

- » Place the collapsed cabin in the assembly area.
- » Position yourself behind the cabin.
- » Pull both sides of the rear cabin frame all the way up.
- » Open the cover of the storage compartment.
- » Pull the rear cross bar back evenly until it engages audibly.

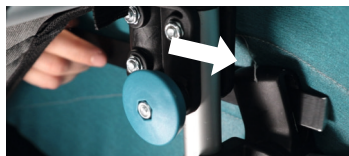


Tip!

Since the cover of the cabin is pulled tightly over the frame of the *Kidgoo*, it can be more difficult to open it at first, until the cover has stretched a little. To make unfolding easier, press with one hand onto the upper frame bar on the roof of the cabin while you pull the folding mechanism backwards.

Installing the side rods

- » Insert the rear end of the side bar through the opening in the lateral folding mechanism.
- » Fix the front end of the side rod using the supplied black hex screws.
- » Repeat the process on the other side.



Installing the wheel axle (Kidgoo2)

The wheel axle is equipped with adjustable leaf springs. The spring effect of both leaf spring plates can be adjusted by moving a clamp, see „**Adjusting the suspension**“ on page 29.

Screw the wheel axle with the leaf springs to the leaf spring holder of the cabin frame.

- » Loosen the 4 hexagon socket screws from the leaf spring seat.
- » Adjust the leaf spring plates with the clamps so that their holes lie on top of each other.
- » The knurled screws of the clamps point away from the cabin during axle mounting.
- » Hold the wheel axle with the leaf springs to the leaf spring holder.
- » Turn the four screws through the leaf spring in the leaf spring holder.
- » Tighten the screws with the hexagon socket screws firmly.
- » Make sure that the red leaf spring plates align parallel with the silver leaf spring holder so that the axle is centered.



Tip!

If the holes of the red leaf spring plates don't align with the ones in the leaf spring holder, loosen the screws which connect the red leaf spring plates to the axle. Afterwards it is possible to move the red leaf spring plates until the holes align properly. Remember to tighten the screws again.

Mounting the foot brake

- » Place the black parking brake modules onto the lateral holders on both sides of the axle.
- » Fasten the parking brake modules with 4 short hexagon socket screws and matching washers.
- » Then place the foot parking brake on the U-shaped metal holder at the rear of the cabin.
- » Insert the 2 long hexagon socket screws together with one washer each into the holes of the foot parking brake and fasten them tightly.



Danger!

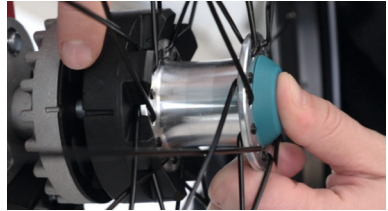
Secure the *Kidgoo* against rolling away each time it is parked, see „**Operating the parking brake**“ on page 20.

Installing the disc brake (Kidgoo Sport)

Follow the instructions in the manual of the Disc Brake Addon.

Inserting the wheels

- » Remove the black rubber caps from the ends of the thru-axles and then dispose of them.
- » Lift the cabin a little bit or place the cabin on its roof in order to install the wheel easier.
- » Insert one wheel into the cabin's axle retainer:
 - Hold the wheel so that you can press your thumb onto the rubber cap on the outside of the wheel hub.
 - Press on the rubber cap and keep it pressed in order to open the push-in axle fastening.
 - Insert the wheel's push-in axle as far as it will go into the axle retainer.
 - Release the rubber cap to secure the push-in axle.
- » Pull on the wheel to check that the wheel is locked in the axle retainer.
- » Insert the second wheel in the same way.
- » Check whether there is sufficient air in the wheels (recommended air pressure: 2.5 – 3 bar). If necessary, use an air pump for car valves to top up with air.



Installing the wheel guard and the leaf spring cover

The wheel guard on both sides of the cabin prevents the wheels from getting stuck on pillars or similar obstacles. The leaf spring covers serve as protection against bruises.

- » Make sure that the slide rails for the wheel guard and leaf spring cover are fixed and tightened on both sides.
- » Slide the wheel guard onto the slide rails as shown in the picture.
- » Be sure that the fixing mechanism locks audibly.
- » Repeat the procedure on the other side of the trailer.
- » Slide the leaf spring cover onto the slide rail as shown in the picture.
- » Be sure that the fixing mechanism locks audibly.
- » Repeat the procedure on the other side of the trailer.



Installing the head protectors

The head protectors serve as additional side protection in case the trailer should tip over.

- » Be sure that the slide rails for the head protectors are fixed and tightened on both sides.
- » Slide the head protector onto the slide rail as shown in the picture.
- » Be sure that the fixing mechanism locks audibly.
- » Repeat the procedure on the other side of the trailer.



Mounting the push handle

The push handle has multiple height settings and is used for pushing, pulling and manoeuvring your *Kidgoo*. When folded, the push handle also provides roll over protection.

- » Prepare the push handle by fully unfolding it. To do this, press and hold the push buttons on both sides, see Adjusting the push handle on page 20.
- » Open the two quick-release fasteners on the cabin frame.
- » Insert the bolts of the push handle into the socket on the cabin frame.
- » Close the quick-release fasteners.



Caution!

When mounting the push handle, make sure that the round joint with the push buttons point upwards (see picture). Only then can the push handle be adjusted to all positions.



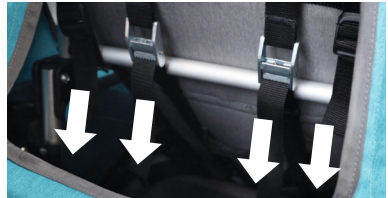
Danger!

Make sure that the push handle is also mounted in trailer mode each time you drive as shown in the table (see „**Setting the mode**“ on page 21), only then is the cabin equipped with an additional roll bar.

Tightening the backrest

The stable backrest is an important safety component. For a good stability the belts under the seat and behind the back rest must always be tightened firmly.

- » Put the cabin in the upright position and open the cover.
- » Check the tension of the 4 black belts under the seat and tighten them firmly.
- » Make sure that the Velcro straps on the sides of the interior which connect the side seat cushions to the side wall are closed.
- » Open the cover of the compartment room and check the tension of the 4 belts behind the backrest.
- » Tighten all belts in the rear compartment room.



Inserting the pennant



Danger!

The pennant must always be mounted in Trailer mode. Otherwise the very low *Kidgoo* is too easily overseen by other road users.

For safety reasons, we recommend putting the pennant into the pennant holder so that it is easily visible before every journey, including in Buggy or Walker mode.

- » Insert the lower part of the pennant pole with the attached centre piece into the slot on the left leaf spring cover.
- » Guide the upper part of the pennant pole through the loop on the left head protector and then insert the pennant pole into the orange centre piece.
- » Unroll the pennant so that it can fly clearly visible on the pennant pole.



Mounting the locking button to the tow bar holder (*Kidgoo2*)

Screw the locking button including the washer to the tow bar holder.

Optional assembly steps

Installing the buggy wheel

You need the buggy wheel for Buggy and Walker mode. The buggy wheel is connected directly with the wheel suspension attached to the frame and is mounted so that it can rotate through 360°.

- » Lift the cabin at the front.
- » Place the buggy wheel into the wheel mount as far as it will go, until it engages audibly with a clicking noise.
- » Check whether there is sufficient air in the buggy wheel (maximum air pressure: 1.9 bar). If necessary, use an air pump for car valves to top up with air.



Adjusting the buggy wheel

- » Set with the release button **a** and mode selector switch (unlock key) **b** in front of the suspension the desired operating mode:
 - Buggy mode: Buggy wheel rotatable through 360°.
 - Walker mode: Buggy wheel running straight.
 - Trailer mode: unfasten and pull out the buggy wheel.



Mounting the tow bar

You only require the tow bar in Trailer mode. It is used to hook up the Kidgoo behind a bicycle equipped with a suitable coupler, see „**Connecting the trailer to a bicycle**“ on page 27.

The tow bar is attached to the tow bar mount using a locking bolt and can be used in two different positions:

- » Attachment position: The tow bar is facing forwards.
- » Standby position: The tow bar is facing to the rear and is carried under the cabin floor.

In both positions, the tow bar is also secured with a locking pin.

- » Pull the locking button with one hand and hold it in place.
- » Push the front button on the tow bar with the other hand so that the locking bolt unlocks.
- » Keep on pushing down the button and push the tow bar forwards until the mark in the tow bar mount is reached.
- » Release the button so that the locking bolt secures the tow bar in the tow bar mount.
- » Release the locking button so that it jumps back into the closed position and additionally secures the tow bar.





Tip!

You do not have to remove the tow bar completely. Simply place the tow bar into the tow bar mount from behind to stow it under the cabin floor, see „**Insert tow bar**“ on page 22.

Mounting the coupler onto a bicycle



Danger!

Make sure that your bicycle is suitable for towing a bicycle trailer, see „**Performance limits**“ on page 4. Since it may in some cases be necessary to change the rear wheel axle, it is best to consult your specialist dealer or the bicycle manufacturer in order to do this.



Caution!

Secure the bicycle to prevent it from toppling over, and make sure that the rear wheel cannot drop out of the axle mount after the screw connection has been undone. Use for example an assembly stand, or turn the bicycle upside down so that you can place it on its saddle and handlebars.

- » Prepare the bicycle for mounting the coupler by undoing the screw connection of the rear wheel axle:
 - Quick-release axle: Open the bracket of the quick-release axle and unscrew the cap nut on the other side of the rear wheel axle.
 - Full axle: Unscrew the nut on the left side of the rear wheel axle.
- » Mount the coupler on the rear wheel axle:
 - Place the large hole of the coupler onto the left side of the rear wheel axle so that the coupler is facing outwards.
 - Screw on the dedicated nut and tighten it slightly.
 - Align the rear wheel so that it can turn freely.
 - Align the coupler so that it faces horizontally to the rear.
- » Tighten the connection to secure the rear wheel:
 - Quick-release axle: Use the supplied quick release adapter. Tighten the cap nut until you can close the clamp with a certain amount of pressure.
 - Full axle: Tighten the nut with a spanner. Always pay attention to the bicycle manufacturer's notes about the tightening torque.





Danger!

The axle nut must be tightened in order to assure sufficient clamping force. Therefore, observe the assembly instructions for the hub and the manufacturer's torque specifications when tightening the axle nut.



Caution!

Due to the construction of the coupler, slight wear and tear in the form of scratches can occur at the connection between bicycle frame and coupler. This is not a reason for a complaint.



Danger!

Do not use a washer or similar at the connection between the bicycle frame and coupler because this could negatively affect the stability of the connection.



Tip!

The provided universal coupler is suitable for mounting on the most rear-wheel models. If it does not fit your bicycle, find a suitable adapter and special couplers in our manuals on the following website: www.qeridoo.de/kupplungsleitfaden



Caution!

Do not use a tool which was previously in contact with conventional steel. Smallest steel particles could be transferred that could lead to contact corrosion.

Installing the rear light

In trailer mode, a certified rear light must be used during poor visibility or darkness in accordance with the Road Traffic Licensing Requirements.

- » Move the push handle to the second last highest position above the roof.
- » Mount the rear light on the left side of the upwardly folded push handle.



Tip!

Follow the attached manufacturer's information for the work of the rear light.

Below you will find all the information for adapting the *Kidgoo* to the required modes and to allow you to use all the convenience functions.

Operating the parking brake



Danger!

Apply the parking brake to secure the *Kidgoo* in order to prevent it from rolling away. Also remember to release it before you set off.

- » Stand behind the cabin and hold it firmly at the push handle.
- » Press the parking brake down with your foot until it clicks audibly to block the wheels.
- » To release the brake, place the tip of your foot under the parking brake and pull it upwards until it clicks audibly.



Caution!

If the parking brake engages not correctly, the wheels are not locked and the trailer can roll away.



Tip!

Use the supplied velcro straps to hold the brake cable in position within the storage space.

Adjusting the push handle

Use the two push buttons to alter the height of the push handle. The push handle can be adjusted to different heights.

- » Press both push buttons and keep them pressed in order to release the height adjustment.
- » Swing the push handle to the desired height.
- » Release the two push buttons in order to activate the engagement function.
- » Move the push handle slightly up or down until the height adjustment engages audibly.



Setting the mode

You can use the Kidgoo in one of the following modes:

- » **Trailer mode:** Carrying children in the Kidgoo when cycling.
- » **Buggy mode:** Using the Kidgoo like a buggy.
- » **Walker mode:** Carrying children in the Kidgoo when walking.

To ensure that the roll-over protection of the push handle provides sufficient headroom in trailer mode, it must be locked in the second to last upper position above the roof. Make sure that there is at least 10 cm clearance between the roof and the push handle.



The table below shows the main settings that you must make for particular components for the respective mode:

Component	Status of the components in mode		
	Trailer	Buggy	Walker
Buggy wheel	must be completely	fitted (freely rotating)	fitted (freely rotating)
Deichsel	directed forwards (pay attention to tow bar load!)	directed backwards	directed backwards
Wimpel	must be mounted	recommended	recommended
Schiebegriff	second to last snap-in position (10 – 15 cm above the roof)	comfortable height	comfortable height
Handschlaufe am Schiebegriff	-	wrapped around a wrist	wrapped around a wrist
5-Punkt-Sicherheitsgurt	must be fastened	muss angeleamt sein	must be fastened
Rücklicht	must work in poor visibility or darkness (follow the Road Traffic Licensing Requirements)	recommended in poor visibility or darkness	recommended in poor visibility or darkness
Fahrrad	the correct coupler must be installed	-	-



Danger!

Vergewissern Sie sich vor jeder Fahrt, dass die für die jeweilige Betriebsart erforderlichen Einstellungen erfüllt sind. Beachten Sie dazu die Hinweise in den nachfolgenden Abschnitten.

Adjusting the buggy wheel

You must make the following settings, depending on the mode.

Removing the buggy wheel (Trailer mode)

The buggy wheel must not be fitted in Trailer mode, because in certain riding situations it can make contact and cause serious accidents.

- » Slightly lift the cabin at the front.
- » Push the release button at the wheel mount and remove the buggy wheel completely.



Tip!

Carry the buggy wheel e.g. in the storage space in order to allow you to use the Kidgoo flexibly at your destination. Instructions for re-mounting it can be found in the chapter „**Installing the buggy wheel**“ on page 17.

Setting the wheel so that it turns freely (Buggy mode)

It must be possible for the wheel to move freely through 360 ° in order to manoeuvre in Buggy mode.

- » Push up the mode switch to allow the free turning of the wheel.

Securing the wheel (Walker mode)

In Walker mode, the wheel must not be at an angle to the direction of travel. You must lock the wheel to run straight ahead in order to prevent abrupt blocking.

- » Push down the mode switch to make sure the wheel is running straight.
- » Turn the positioned wheel backwards until it engages audibly.

Insert tow bar

The tow bar can either be brought forward into the attachment position or carried along backwards in the standby position. Pay attention also to the instructions in the chapter „**Mounting the tow bar**“ on page 17.



Danger!

Wrap the retaining strap of the tow bar around the tow bar several times to ensure it does not hang down in the standby position. Otherwise it could become trapped on obstacles.

Using the pennant

The pennant must be attached in Trailer mode, see Inserting the pennant on page 16. For safety reasons, we also recommend this for the other modes.

Attaching the hand strap

In Buggy and Walker mode, the hand strap secured to the push handle must be attached to your wrist during every journey.

Putting on the 5-point safety harness

In every mode, the 5-point safety harnesses must be properly adjusted and every child must be fastened in, see „**Strapping in children**“ on page 24.

Securing the load

Loading the baggage

Loading the storage space

- » Undo the magnetic fasteners of the storage space cover and lift it.
- » Pack larger items such as bags, toys or coats in the storage space.
- » Close the cover carefully.

Using the pouch on the outside

- » Open the cover of the outer pocket.
- » Put all the utensils in the outer pocket that you want to have at hand quickly when you are on the move.

Using the pouch on the inside

- » Put the children's drinking bottles or toys into the pouch for small items in the cabin's foot pace.



Tip!

Use the zig-zag rubber lacing on the outside of the storage cover to keep items such as a jacket or umbrella within easy reach.



Danger!

When loading, pay attention to the total permissible weight and the weight limits for the storage space, see „**Performance limits**“ on page 4.

Embarking the children

Preparing the cabin

- » Apply the parking brake to secure the Kidgoo in order to prevent it from rolling away.
- » Loosen both belt locks of the cover and unfold them completely.

Adjust the safety harnesses to the number of children, see „**Mid sitting position (Kidgoo2)**“ on page 25.

- » Open the safety harness required:
 - Release the harness catch by pressing the pushbutton.
 - Pull the two tabs out of the belt buckle.
 - Loosen the small locks which fix the belt cushions in place.



Placing the children

- » Put a suitable bicycle helmet on children or use the optional available head rests.
- » Let the children get in one after the other, or lift them into the cabin.
- » If necessary, adjust the head rests by securing them to the seats at a different height with the Velcro strips.



Tip!

A balanced load distribution is particularly important in Trailer mode. If the two children differ greatly in terms of their weight, you should therefore put the heavier child in the righthand seat. Interacting with the tow bar mounted on the left, this favourably influences handling.

Strapping in children

- » Pull the red strap under the seat forward to release the tension of the seat belts.
- » Keep the red webbing pulled so that you can adjust the length of the seat system webbing. Choose a sufficient length so that the child can be strapped in comfortably.



Tip!

Adjust the seat belt, the belt pads and, if necessary, the head restraints to the size of the child.

- » When adjusting the belt length, make sure that you only pull on the belt straps themselves and not on the belt padding, as these are fixed to the seat backrest.
- » Insert the tabs into the belt buckle until they click audibly.
- » Check that all parts of the 5-point safety harness fit properly and comfortably.
- » Close the small locks to fix the belt pads if the belt pads of the 5-point safety belts are too loose. However, always make sure that there is enough distance between the locks and the child's neck. For older children, additional fixation of the belt pads is not recommended or not possible in the middle sitting position.
- » Pull the grey strap under the seat to tighten the straps of the seat system.
- » Close the cover and secure it appropriately.





Tip!

If the child is too small for the 5-point seatbelts, then we recommend to use the accessories, such as a hammock, a baby seat or a seat reducer if it is able to sit upright.



Danger!

Before every journey, check that the safety harnesses and harness catches are sitting correctly. Failure of the restraining function can result in serious or even fatal injuries in the event of an accident. Start driving only when all children either wear a cycling helmet or use a head rest and are properly belted.

Mid sitting position (Kidgoo2)

To achieve optimum load distribution, it is important for the load's centre of gravity to be approximately in the middle of the cabin. In the as-delivered state, the 5-point safety harnesses are pre-adjusted for carrying two children. If you only want to carry one child, you must adjust the safety harnesses so that the child can sit in the middle.

- » Pull the straps out of the inner belt buckles.
- » Change round the pads and tongues:
 - Push the pad and the tongue of the inner left harness onto the right harness.
 - Push the pad and the tongue of the inner right harness onto the left harness.

- » Secure the belts using the belt buckles:
 - Thread each end of the belt in the buckle as it is shown in the picture.
 - Be sure to check both belt buckles sit firmly.
- » Put the harness catch, including the pad, onto the centre harness on the front of the seat. Use the harness catch of the left or right seat to do this.
- » Repeat this procedure in reverse order whenever you require the safety harnesses for carrying two children.



Checking the weight distribution and tow bar load

An optimum weight distribution is important for safe handling: The load's centre of gravity should always lie in the centre of the wheel axle. The tow bar load with which the tow bar lies on the coupler must be neither too great nor too low in Trailer mode:

- » Tow bar load too great (> 8 kg): Too much load on the coupler.
- » Tow bar load too low (< 0 kg): The trailer could reduce the traction of the bicycle through lifting and thereby cause critical situations in curves.
- » Center of gravity too far out: One-sided loading favors overturning in curves.



Danger!

Distribute the load evenly across the width of the Kidgoo. If you are carrying only 1 child, he/she must sit in the middle, see „Mid sitting position (Kidgoo2)“ on page 25.

Check the tow bar load before every journey with a trailer. Tow bar loads outside the permitted range of 0 – 8 kg cause unwanted handling performance.

Checking the tow bar load

Use bathroom scales, for example, to measure the tow bar load:

- » Do not connect the trailer to the bicycle yet.
- » Place the bathroom scales next to the tow bar.
- » Get onto the bathroom scales and note the weight displayed.
- » Lift the tow's bar coupler pocket to the coupler height (ca. 35 cm).
- » The tow bar load is the difference between the measured values:
 - The weight **must be equal to or higher** than the measured value without the tow bar.
 - The weight **may be a maximum of 8 kg** more than the measured value without the tow bar.



Changing the tow bar load

Adjust the tow bar load by moving or reducing your baggage:

- » Tow bar load over 8 kg: Move luggage to the back.
- » Tow bar load less than 0 kg: Move luggage to the front.

Total weight too heavy

- » Reduce the baggage weight in the pouch for small items.
- » Reduce the baggage weight in the storage space.
- » Make sure that the loaded *Kidgoo1* weighs less than 50 kg.
- » Make sure that the loaded *Kidgoo2* weighs less than 60 kg.

Connecting the trailer to a bicycle



Danger!

Do not connect the Kidgoo to a bicycle until the following conditions have been fulfilled:

- » The trailer is fully loaded.
- » The children wear a bicycle helmet or use a head rest and are properly belted.
- » The buggy wheel has been removed.
- » The tow bar load has been checked and is within the permissible range (0 – 8 kg).

- » Remove the retaining cotter pin from the tow bar coupler pocket.
- » Push the tow bar onto the coupler of the bicycle so that the cotter pin holes in the coupler and tow bar coupler pocket are one above the other.
- » Insert the cotter pin into the hole and lock the cotter pin fastening.
- » Check that the connection between the coupler and the tow bar is secure.
- » Guide the tow bar's retaining strap through the braces of the rear wheel so that the trailer is securely connected to the bicycle frame.
- » Fix the safety strap using the clamping buckle on the tow bar head. Make sure that it cannot flutter into the spokes of the rear wheel while riding. If necessary, wrap the safety strap several times around the bicycle frame and fix the end of the strap with the rubber ring on the shaft of the tow bar.



Danger!

Always make sure the safety strap is in place before using the product in trailer mode. In addition, make sure that the safety strap can not get into moving parts of the towing bike.



Danger!

Always secure the tow bar to the bicycle frame with the retaining strap. This ensures that the trailer will remain connected even if the tow bar becomes detached from the coupler.

Irrespective, the coupler must always be properly mounted and the connection to the tow bar must be secured with the locked cotter pin. Otherwise the tow bar can be come detached and can be pushed into the rear wheel's spokes during braking.

Decoupling the trailer

- » Loosen the safety strap and wrap it around the tow bar. Fix the safety strap to the tow bar using the clamping buckle.
- » Remove the cotter pin from the coupling and pull the tow bar head out of the coupling.
- » Reinsert the cotter pin into the coupling head and lock it in place.
- » Stow the tow bar in the ready position as described in the chapter „**Mounting the tow bar**“ on **page 17**.

Using the comfort functions

Using the climate functions

Adjusting the 3-in-1 canopy

The 3-in-1 canopy is comprised of an insect net, an adjustable sun visor and a weather canopy:

- » The inner part of the 3-in-1 canopy must be closed during every journey because the integral insect net provides protection against insects and small stones.
- » The outer skin of the 3-in-1 canopy is comprised of a durable transparent sheet and can be rolled up. It provides protection against splash water and strong winds, and dissipates exhaust gases out of the cabin.

Opening the weather canopy:

- » Open the zips attached on the sides which connect the weather canopy to the insect net.
- » Roll up the weather canopy and secure the roll at the top with the two toggle fasteners.

Closing the weather canopy:

- » Open the top toggle fasteners and unroll the weather canopy over the insect net.
- » Close the both zips on the sides and the lower Velcro fastener.



Danger!

Never ride with the cover open. As a minimum, the insect net must be closed in order to provide protection against stones. In bad weather or heavy traffic, also close the window foil.

Stow away the 3-in-1 canopy

- » Roll up the 3-in-1 canopy.
- » Insert the rolled up canopy into the pocket at the underside of the roof.
- » Use the toggle fasteners to close the bag.



Using the sun visor

The sun visor is housed in the canopy between the insect net and the splash water window. The length can be adjusted with Velcro fasteners.

- » Roll up the splash water window.
- » Fold the sun visor to the desired length and lock it with the side Velcro fasteners.
- » If necessary you can also roll up the sun visor completely and close the splash water window again.



Using the ventilation windows

The purpose of the ventilation windows of the Kidgoo is to improve air circulation in the cabin.

Lateral ventilation windows:

- » To open, release the Velcro fastener of the window film in the cabin and fold it down.
- » » To close, secure the window film with the Velcro fastener again.



Danger!

Open the ventilation windows on hot days or in heavy traffic in order to dissipate warm air and exhaust fumes out of the cabin more quickly.

Adjusting the suspension

The leaf springs of the *Kidgoo* are adjustable by simply moving the clamps.



Caution!

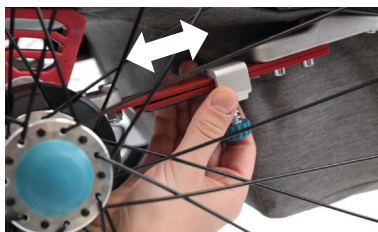
Make sure that the resilience is suitable for the current load each time you drive. If you hear strokes while driving over bumps, then the suspension is set too softly. Immediately adjust the setting by moving the clamp towards the wheel axle.



Danger!

Always set the same values on both leaf springs; different spring travels can negatively influence the driving behavior.

- » To move the clamp on the leaf spring plates, loose the knurled screw in order.
- » Move the clamp with the knurled screw according to the following instructions:
 - Move the clamp all the way to the front when you carry a very light child and little luggage (soft suspension).
 - Move the clamp backwards for two children and a lot of luggage (harder suspension).
- » Tighten the knurled screw firmly and set the same value on the other leaf spring.



Storage

For storage, simply fold the Kidgoo together and store it in a protected and dry place without direct sunlight. Please also consider the information in the chapter „Care“ on page 31.



Danger!

Hands or fingers can become trapped on moving parts while setting up and folding up the cab. Carry out work carefully and keep children away from the vehicle.

- » Take position behind the cabin and open the storage space cover.
- » Pull the two release buttons to release the lock of the folding mechanism.
- » Hold the release buttons firmly and press them forward.
- » Fold up the cabin by pressing both sides of the rear cabin frame all the way down.
- » In order to take up less space, you can also fold in the push handle and remove the wheels.
- » In the lowest position, the push handle also serves as a transport lock for the cabin preventing it from folding open.



Caution!

Only fold up the cabin after it has been cleaned both inside and outside and is completely dry.



Caution!

Despite the use of weather proof material, the corrosion cannot be completely eliminated.

De-icing salts such as magnesium chloride can lead to stress corrosion cracking on the components. In winter or in case of rain, it is also recommended to clean the trailer after each ride with a dry cloth. In addition, a treatment with cleansers and preservatives such as wax or spray oil every two weeks is recommended.



Caution!

Please note that textiles or fabric parts must always be completely dry in order to avoid the formation of mould and mildew stains. Always use the right raincover when driving in the rain or on snow.

To avoid bleaching of the fabric, we do not recommend exposing the trailer to direct sunlight. When transporting the trailer in the vehicle, cover the trailer because the glass of a vehicle can accelerate the bleaching of the fabric.

Regular care and maintenance of all parts and components helps prevent premature wear and keeps the *Kidgoo* ready for use at all times. This is particularly important when one of the following influencing factors applies to your individual conditions of use:

- » Frequent use with high mileage.
- » Regular use close to the maximum permitted total weight.
- » A sporty riding style (sudden starting and braking, cornering at speed etc.).
- » Excessive weather influences such as UV radiation, temperature fluctuations, moisture, contact with salt (sea water, salty air, road salt).
- » Unfavourable storing conditions (shortage of space, variations in temperature, sun light and humidity).



Caution!

It is essential to adhere to the following care instructions and maintenance intervals. Perform the tests stated in the checklists conscientiously and at the specified times in order to use the *Kidgoo* in a technically safe condition.

Replace damaged components immediately, see „**Spare parts**“ on page 37. If necessary, contact our service department or your local specialist dealer, see „**Support information**“ on page 36.

Care



Caution!

For cleaning, use only water and domestic care agents such as detergents and textile care products, soft cloths or impregnation and silicone spray. Do not use any sharp edged tools or cleaning agents with a scouring effect. Cleaning agents containing acids and solvents are also not permitted.

After every use

- » Clean the inside of the cabin.
- » Pay attention to coarse dirt and remove it immediately if possible.

After use in harsh weather conditions

- » Clean the inside and outside of the cabin thoroughly.
- » Care for all sliding or moving parts with silicone spray.
- » Only fold up the cabin after it has been cleaned and is completely dry.
- » Dry the frame and the entire cover.

Care and maintenance

When not in use

- » Store the *Kidgoo* only in places where the storage temperature falls within the range of -23 °C to maximum 65 °C.
- » The trailer should only be stored folded when completely dry.
- » The storage location should be dry, well ventilated and protected against direct sunlight.
- » At higher storage temperatures, you should store the wheels separately from the cabin because the tyres' rubber can cause odours.
- » Use a Qeridoo folding garage if the *Kidgoo* must be kept outdoors.



Caution!

Please note that when using the optional folding garage, the trailer must be completely dry.

Maintenance intervals



Caution!

Replace corroded steel and aluminium parts immediately. Never bend back deformed or bent aluminium parts (danger of breakage). Replace bent aluminium parts immediately. Immediately replace plastic parts that have become porous or fragile due to the effects of the weather, for example.

Before every ride

- » Check that the wheels are secure. The push-in axles must be engaged in the axle mount and it must not be possible to pull them off without pressing the rubber cap.
- » Check the air pressure in the wheels. It should be in the range of 2.5 – 3 bar.
- » Check the air pressure of the buggy wheel (maximum air pressure: 1.9 bar).
- » Check the total weight, including children and baggage.
- » Check the fasteners of the cover and close them if necessary.
- » Inspect all harnesses on the back and under the cabin to make sure that they are secure. They must be firmly tightened to hold the cover and backrest securely.
- » Trailer mode: Make sure that the buggy wheel has been removed and that the requirements described in the chapter „**Connecting the trailer to a bicycle**“ on page 27 have been fulfilled.
- » Buggy mode: Make sure that the buggy wheel can rotate freely. Put the hand strap of the push handle around your wrist in order to prevent accidental rolling away.
- » Walker mode: Make sure that the buggy wheel is secured facing straight ahead. Put the hand strap of the push handle around your wrist in order to prevent accidental rolling away.
- » Check whether the tow bar, coupler and buggy wheel and their attachments are technically OK.
- » Check the condition of the wheels. Replace covers and hoses in good time.

Monthly (or every 200 km)

- » Check the textile cover, all fasteners, the seats and the safety harnesses for cracks, wear and missing parts.
- » Inspect all frame tubes and all connecting pieces and fastening components for signs of wear and damage.
- » Check that all screw and cotter pin connections are secure.
- » Clean the inside and outside of the cabin thoroughly.

Care and maintenance

Semi-annually (or every 500 km)

- » Care for all sliding and moving parts with silicone spray.
- » Check the spoke tension, which must be between 90 and 100 kg.
- » Clean the quick-release axle of the tires with silicon spray.

Every three years (or every 3.000 km)

- » Have a full inspection carried out by a specialist workshop no later than every three years.
- » Change the red leaf spring plates (wear parts).

Alle vier Jahre (oder alle 5.000 km)

- » Change the thru axle.

Technical data

External dimensions	Kidgoo1	Kidgoo2
Length (Trailer mode)	155 cm	157 cm
Width (external width from wheel to wheel)	67 cm	81 cm
Height (from ground to cabin roof)	95 cm	95 cm
Height of push handle (lowest / highest set dimension)	58 cm / 120 cm	58 cm / 120 cm
Pack size of the collapsed cabin (H x W x L)	38 x 54 x 105 cm	38 x 67 x 105 cm
Internal dimensions	Kidgoo1	Kidgoo2
Seat width (max. width at shoulder height, across both seats)	48 cm	60 cm
Seat height (max. height between seat and cabin roof)	69 cm	69 cm
Legroom (max. length between backrest and foot rest)	51 cm	51 cm
Storage space back	ca. 38 l	ca. 45 l
Weights	Kidgoo1	Kidgoo2
Weight trailer-mode (cabin, wheels, push handle, tow bar)	16,8 kg	18,45 kg
Wheels	Kidgoo1 and Kidgoo2	
Wheel		
Type	20" spoked wheel, push-in axle	
Tyres	20 x 1,75 (47-406)	
Hose size	20", 20 – 50 mm wide	
Valve type	Car valve (Schrader)	
Air pressure	2,5 – 3 bar	
Buggy wheel		
Type	8,5"-wheel (pneumatic tyre)	
Valve type	Car valve (Schrader)	
Maximum air pressure	1,9 bar	
Ambient conditions	Kidgoo1 and Kidgoo2	
Storage location	Dry, ventilated, no direct sunlight	
Temperature range for storage	-23 °C – 65 °C	

Warranty terms

Exclusive manufacturer warranty

Qeridoo guarantees to the end customer that the **product is free of defects for a period of 2 years**. In addition, Qeridoo offers the extended **warranty on the frame for 5 years**. The warranty is independent of the statutory warranty and is not affected by this. The warranty begins on the date of purchase by the end customer. The warranty claim is only intended for first-time buyers and is only valid in the Federal Republic of Germany. The rights from the guarantee contract are not transferable and apply exclusively to the first purchaser. Please keep the original invoice and the guarantee document (guarantee card), which are required as proof of ownership. It is recommended to keep the original packaging in case of a return. The warranty does not cover bearings, wheels, tyres and other wearing parts. The warranty does not cover damage caused by deliberate or unintentional improper handling or use, improper storage or consequential damage. Furthermore, normal wear and tear and defects due to improper use or lack of care, as well as discoloration of covers, are excluded from the warranty.

Claims under this warranty shall only exist if the following warranty conditions are adhered to. The buyer registers the product within 3 months after purchase at [herstellergarantie.qeridoo.de](https://www.qeridoo.de/herstellergarantie). For registration, the invoice with the date of purchase from an authorized Qeridoo dealer is required. Also required are the name, address, email address and serial number of the product registered for warranty. Your data will be securely stored by us in accordance with the new BDSG §1 paragraph 1 (Federal Data Protection Act). The data will only be used for the purpose of checking and processing a warranty claim. Qeridoo reserves the right to verify the cause of the defect within the framework of the legal regulations.

In addition, the registration serves as proof of ownership in the event of theft. The warranty service is provided by Qeridoo or an authorized dealer after release by Qeridoo. After assessing the damage, Qeridoo decides at its own discretion whether a warranty case exists and how it will be handled.

The warranty expires in the event of independent repair attempts by the customer or a third party commissioned by the customer, as well as in the event of improper modification of the product. There will be **no reimbursement of costs** or compensation for lost use of the product in case of warranty claims. In the event of replacement, the replaced product will become the property of Qeridoo. If the product is no longer held by Qeridoo, a product of a similar type and quality will be replaced at Qeridoo's option. In case of an exchange, the warranty period does not start again and will not be extended. The rights of the end customer under the sales contract or the law are not affected by this manufacturer's warranty.



Caution!

We do not guarantee for the following defects:

- » Formation of mould and mildew stains.
- » Formation of rust marks by inadequate maintenance.
- » Usual signs of wear and tear, scratches, as well as signs of use and abrasion due to improper use.



Tip!

You can easily register a warranty case online (service.qeridoo.de) that guarantees you easy processing.

With your complaint, please provide an exact description of the fault (if possible with photos) and a copy of the original purchase receipt. Please also state the vehicle's serial number. You can find this on the label or on the frame rod assembly in the storage space.

Support information

Please contact us directly if you have any questions about our products:

Qeridoo GmbH

Industriepark Nord 100
53567 Buchholz
Deutschland

URL: www.qeridoo.de

Mail: info@qeridoo.de

Fax: +49 (0) 2683 9451925

Hotline

+49 (0) 2683 9466577

(Mon. – Thu.: 9 am – noon and

2 pm – 4 pm;

Fri: 9 am – noon)

You can find our **current list of dealers** on the Internet at:
haendersuche.qeridoo.de

Spare parts

(valid from 2020)



Frame components

Pos.	Article	Article-No. Kidgoo1	Article-No. Kidgoo2
01	Head protector set 2019	KPNS-19-SET	KPNS-19-SET
02	Parking brake set 2020	FPB-20-SET	FPB-20-SET
03	Handlebar set from 2020	HGKG1-20-SET	HGKG2-20-SET
04	Folding mechanism set 2020	FMKG1-20-SET	FMKG2-20-SET
05	Axle set	A1-20-SET	A2-20-SET
06	Leaf suspension cover set 2019	BFA-19-SET	BFA-19-SET
07	Wheel complete 20" 2020	RAD-20-20-SET	RAD-20-20-SET
08	Wheel guard set	RANS-18-SET	RANS-18-SET
09	Tow bar mount set 2020	DEA-20-SET	DEA-20-SET
10	Tow bar complete 2020	DEI-1-20-SET	DEI-2-20-SET
11	Coupling bicycle connection accessory 2019	KUFA-19	KUFA-19
12	Multiwheel from 2017 set	BR-17-SET	BR-17-SET
13	Buggywheel adapter middle part 2020	BRAM-20-SET	BRAM-20-SET
14	Basis frame set 2020	GGKG1-20-SET	GGKG2-20-SET
15	Frame bar top Kidgoo 2019	Y-RSOKG-20	Y-RSOKG-20

Other spare parts



Star knob for handle bar
Art.-No.: **Z-VKDA-20**



Belt pad set 2020
Art.-No.: **GP-20-SET**



Rubber cap 20" Wheel 2020
Art.-No.: **Z-GUKA20-20**



Belt pad left 2020
Art.-No.: **Z-GPL-20**



Adjustment leaf suspension (petrol)
Art.-No.: **EBP-SET**



Belt pad right 2020
Art.-No.: **Z-GPR-20**



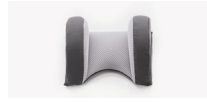
Leaf spring long 166x25
Art.-No.: **Y-BFL166x25**



Crotch pad 2020
Art.-No.: **Z-SCHPO-20**



Leaf spring short 127x25
Art.-No.: **Y-BFK127x25**



Head rest 2020
Art.-No.: **Y-KS-20**



LED back light 2020
Art.-No.: **Y-LBRL-20**



Harness catch
Art.-No.: **GUR-69**



Cover petrol / grey (Kidgoo1)
Art.-No.: **Y-B-Q8-20-P / G**



Reflector white 2019
Art.-No.: **Y-RSW-K-19**



Cover petrol / grey (Kidgoo2)
Art.-No.: **Y-B-Q9-20-P / G**



Reflector red 2019
Art.-No.: **Y-RSR-K-19**



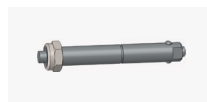
Comfort seating system easy ARS
Art.-No.: **KSKG1-20-SET** (Kidgoo1)



20" hose
Art.-No.: **789SCH**



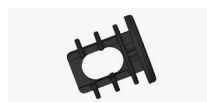
Toggle fastener with strap
Art.-No.: **KÖRD-55**



Hub axle with locking nut set 2018
Art.-No.: **SAM-18-SET**



Harness buckle
Art.-No.: **GRT-899**



Plug connection Ø22.2 2017
Art.-No.: **Z-RS22**

Appendix



Pennant holder, centre piece
Art.-No.: **WIM-H-UN**



Pennant complete 2020
Art.-No.: **Y-WIM-20**



Wheel cover
Art.-No.: **RDSH**



Wheel guard right 2018
Art.-No.: **Z-RAR-18**



Wheel guard left 2018
Art.-No.: **Z-RAL-18**



Leaf suspension cover left
2019
Art.-No.: **Y-BFAL-19**



Leaf suspension cover right
2018
Art.-No.: **Y-BFAR-18**



Slide adapter 2018
Art.-No.: **Y-SCHA-18**



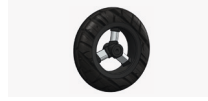
Slide adapter round to square
2018
Art.-No.: **Y-SAA-18**



Safety strap tow bar 2019
Art.-No.: **Z-SBD-19**



Buggywheel adapter 2017
Art.-No.: **Z-LRAM-17**



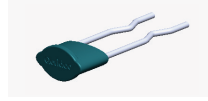
Buggy Multiwheel 8.5" 2017
Art.-No.: **Z-LRMW-8.5-17**



Hub axle for Multiwheel
Art.-No.: **Z-SA-MW-17**



Mode switch 2020
Art.-No.: **Z-BASM-20**



Push button Multiwheel 2020
Art.-No.: **Z-DKMW-20**



Hand strap for handlebar 2019
Art.-No.: **Z-HSHG-19**



Head protector left 2019
Art.-No.: **Z-KPL-19**



Head protector right 2019
Art.-No.: **Z-KPR-19**



Rubber Damper 2020
Art.-No.: **Z-GDA-20**



Rev. 09/2020#1151

Qeridoo

Industriepark Nord 100 | 53567 Buchholz
Tel +49 (0) 2683 9466577 | info@qeridoo.de

www.qeridoo.de